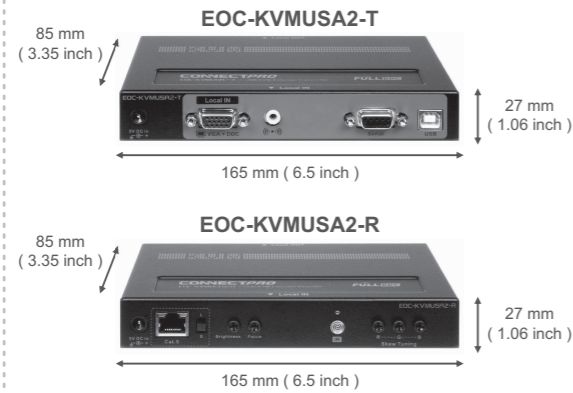


EOC-KVMUSA2

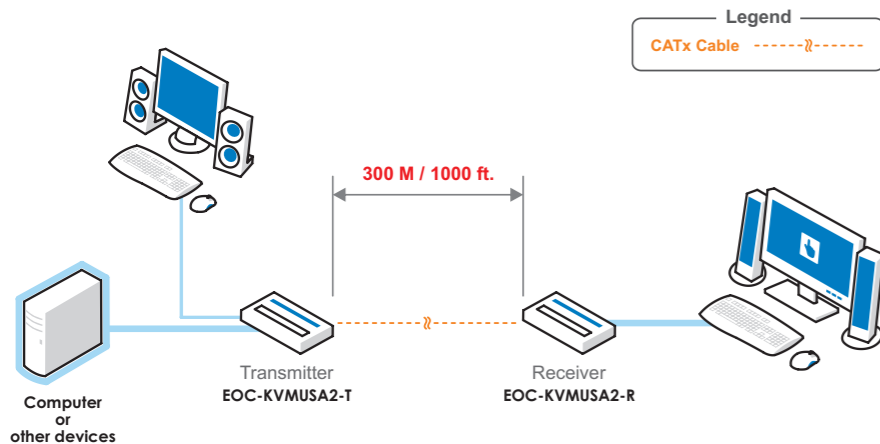
Professional Video + Serial + Audio KVM extender over CATx cable up to 1000 ft.

Installation Guide

Product View



Application Connection Diagram



Packing List

Standard



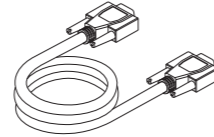
EOC-KVMUSA2-T
Transmitter



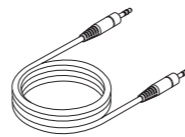
EOC-KVMUSA2-R
Receiver



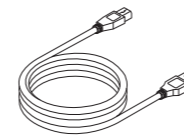
GW-Y-200
6.5-ft Chassis Ground Wire Cable w/ Y Terminal x 2



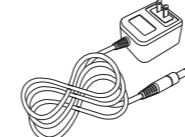
CMV-202-03
3-ft Male-to-Male Video Cable x 1



CAS-202-03
3-ft Stereo Audio Cable x 1

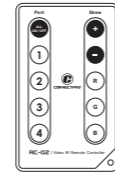


UC-AB-04
4-ft USB A-to-B cable x 1

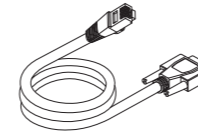


PAUS-DC5V1A (US)
Power Supply DC 5V 1A x 2

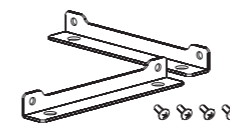
Optional part / accessory



RC-02
IR Remote Controller



CRJ45-DB9F-5
5-ft RJ45-to-Serial cable x 1



WMK-01
Wall Mounting Kit x 2

Ordering Information

| Model | Description |
|---|---|
| EOC-KVMUSA2-T | Video + Serial + Audio KVM extender over Cat5 Transmitter |
| EOC-KVMUSA2-R | Video + Serial + Audio KVM extender over Cat5 Receiver |
| Cables | |
| CMV-202-03 | 3-ft Male-to-Male video cable |
| CAS-202-03 | 3-ft Stereo audio cable |
| UC-AB-04 | 4-ft USB A-to-B cable |
| CRJ45-DB9F-5 | 5-ft RJ45-to-serial cable |
| GW-Y-200 | 6.5-ft Chassis ground wire cable w/ Y terminal |
| Power Adaptor | |
| PAUS-DC5V1A | Power supply DC 5V (1000 mA) - AC 100-120 / 220-240V for USA |
| PAEU-DC5V1A | Power supply DC 5V (1000 mA) - AC 100-120 / 220-240V for Europe |
| * Any other interface is available upon request | |
| IR Remote Controller | |
| RC-02 | IR remote controller for Video / Audio Solution products |
| Wall Mounting Kit | |
| WMK-01 | Wall mounting kit |

Installation

Connections at the transmitter (EOC-KVMUSA2-T)



1 Connect power adaptor



2 Connect video input from the source PC system



3 Connect audio input from the source PC system



4 Connect USB input from the source PC system



5 Connect with a local monitor



6 Connect with a local speaker amplifier



7 Connect the link Cat.5 cable



8 Console selection :
T only : only console in transmitter can be operated
T+R : consoles in both transmitter and receiver can be operated

Connections at the receiver (EOC-KVMUSA2-R)



1 Connect power adaptor



2 Connect video output with device / monitor



3 Connect audio output with device / speaker amplifier



4 Connect USB output with device / touch monitor



5 Link Cat.5 cable



6 Set DDC in transmitter :
Red LED on : DDC in receiver is stored
Red LED off : DDC in transmitter is stored



7 Skew brightness and focus



8 Skew R.G.B tuning

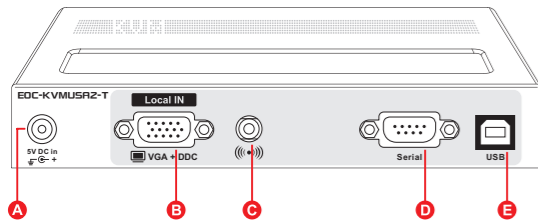


9 If necessary ; use I.R remote controller to fine tune R.G.B skew

Unit Input & Output View

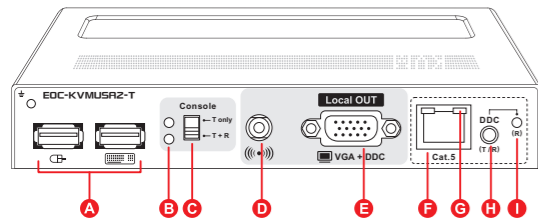
EOC-KVMUSA2-T

Transmitter Unit - Input



- A DC jack
- B VGA input
- C Audio input (Mono)
- D Serial port control
- E USB

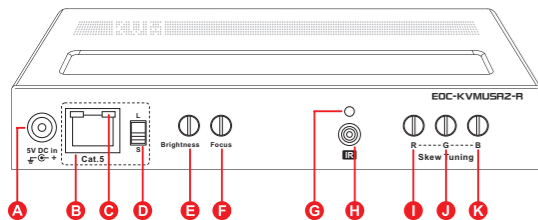
Transmitter Unit - Output



- A USB 2.0 connections for mouse and keyboard
- B Console indicator
- C Console switch
- D Audio output (Mono)
- E VGA output
- F RJ-45 Cat.x connector
- G RJ-45 Cat.x indicator
- (L) Green flash = Cat.x not connected
Green not flash = Cat.x connected
- (R) Orange flash = V+A mode
Orange not flash = V+U mode
- H DDC button
- I DDC button indicator

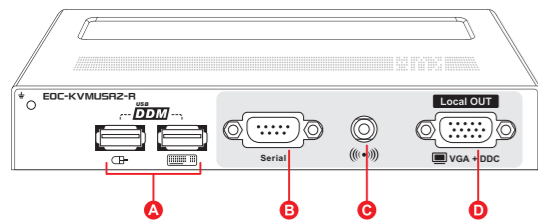
EOC-KVMUSA2-R

Receiver Unit - Input



- A DC jack
- B RJ-45 Cat.x connector
- C RJ-45 Cat.x indicator
- (L) Green flash = Cat.x not connected
Green not flash = Cat.x connected
- (R) Orange flash = V+A mode
Orange not flash = V+U mode
- D Cat.x cable length
L = Long
S = Short
- E Brightness
- F Focus
- G IR indicator
- H IR receiver
- I Video red color skew
- J Video green color skew
- K Video blue color skew

Receiver Unit - Output

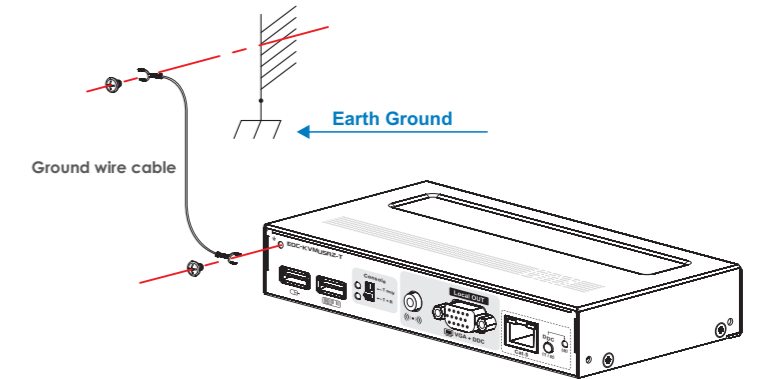


- A USB complies 2.0 HID devices DDM connections for mouse and keyboard
- B Serial port control
- C Audio output (Mono)
- D VGA output

Specification

| | EOC-KVMUSA2-T | EOC-KVMUSA2-R |
|----------------------|---------------------------------------|--------------------------------|
| Mechanical | | |
| Height | 27 mm (1.06 inch) | |
| Width | 165 mm (6.5 inch) | |
| Depth | 85 mm (3.35 inch) | |
| Weight | 440 g (0.97 lb) | 430 g (0.95 lb) |
| Environmental | | |
| Operating temp | 0 to 60 °C (32 to 140 °F) | |
| Storage temp | -30 to 70 °C (-22 to 158 °F) | |
| Humidity | 0~80% RH, NC | |
| Connector | | |
| Operating voltage | DC 5V (1000 mA) | |
| Power frequency | 50-60 Hz | |
| Input power | AC 100-120 / 220-240V | |
| Power consumption | 1.2 W | 3.5 W |
| Ports | | |
| Input | HDB-15 Female x 1 | RJ-45 / 8P8C x 1 |
| | Stereo Audio Jack x 1 | Focus adjustment tune x 1 |
| | DB-9 Female x 1 | Brightness adjustment tune x 1 |
| | USB B x 1 | RGB adjustment tune x 1 |
| Output | RJ-45 / 8P8C x 1 | HDB-15 Female x 1 |
| | HDB-15 Female x 1 | Stereo audio jack x 1 |
| | Stereo audio jack x 1 | USB A (DDM Technology) x 2 |
| | USB A x 2 | DB-9 Female x 1 |
| Supported | | |
| Audio | Mono | |
| Resolution | 1920 x 1200 | |
| DDC | DDC , DDC2 , DDC2B | |
| VGA | VGA , SVGA , XGA , SXGA , UXGA , QXGA | |
| Certification | | |
| | FCC, CE | |

Earth Ground



Special note:
Connected to metal ground wire / pole inserted into cement / concrete floor.

Limited Warranty For ConnectPRO Video / Audio Extender

ConnectPRO offers 1-year limited warranty for all of its Video / Audio Solution products. ConnectPRO stands behind its products assured that you're purchasing a proven technology with quality and reliability.



ConnectPRO - USA, Taiwan
www.connectpro.com

Corporate Office

20525 Paseo Del Prado Walnut, CA 91789, USA
Tel +1-909-444-9288 Fax +1-909-444-9289

Design Center and Operational Hubs

13F., No.120, Sec. 1, Sanmin Rd., Banciao Dist.,
New Taipei City 220, Taiwan, R.O.C.
Tel +886-2-8964-2700 Fax +886-2-8964-2977