



CDPS-UA6H2HFS

6 x 2 HDMI 4K UHD Matrix with HDCP 2.2



Operation Manual



DISCLAIMERS

The information in this manual has been carefully checked and is believed to be accurate. Cypress Technology assumes no responsibility for any infringements of patents or other rights of third parties which may result from its use.

Cypress Technology assumes no responsibility for any inaccuracies that may be contained in this document. Cypress also makes no commitment to update or to keep current the information contained in this document.

Cypress Technology reserves the right to make improvements to this document and/or product at any time and without notice.

COPYRIGHT NOTICE

No part of this document may be reproduced, transmitted, transcribed, stored in a retrieval system, or any of its part translated into any language or computer file, in any form or by any means - electronic, mechanical, magnetic, optical, chemical, manual, or otherwise - without express written permission and consent from Cypress Technology.

© Copyright 2015 by Cypress Technology.

All Rights Reserved.

TRADEMARK ACKNOWLEDGMENTS

All products or service names mentioned in this document may be trademarks of the companies with which they are associated.



SAFETY PRECAUTIONS

Please read all instructions before attempting to unpack or install or operate this equipment, and before connecting the power supply.

Please keep the following in mind as you unpack and install this equipment:

- Always follow basic safety precautions to reduce the risk of fire, electrical shock and injury to persons.
- To prevent fire or shock hazard, do not expose the unit to rain, moisture or install this product near water.
- Never spill liquid of any kind on or into this product.
- Never push an object of any kind into this product through any openings or empty slots in the unit, as you may damage parts inside the unit.
- Do not attach the power supply cabling to building surfaces.
- Use only the supplied power supply unit (PSU). Do not use the PSU if it is damaged.
- Do not allow anything to rest on the power cabling or allow any weight to be placed upon it or any person walk on it.
- To protect the unit from overheating, do not block any vents or openings in the unit housing that provide ventilation and allow for sufficient space for air to circulate around the unit.

REVISION HISTORY

VERSION NO.	DATE DD/MM/YY	SUMMARY OF CHANGE
RDV1	01/07/15	Preliminary Release

CONTENTS

1. Introduction.....	1
2. Applications.....	1
3. Package Contents	1
4. System Requirements.....	1
5. Features.....	2
6. Operation Controls and Functions.....	3
6.1 Front Panel.....	3
6.2 Rear Panel.....	4
6.3 Remote Control.....	5
6.4 IR Pin Definitions.....	6
6.5 OSD Menu	6
6.6 RS-232 Protocols	12
6.7 Telnet and RS-232 Commands	12
6.8 Telnet Control	17
6.9 Web GUI Control.....	19
7. Connection Diagram	22
8. Specifications	23



1. INTRODUCTION

The 6 by 2 HDMI 4K UHD Matrix with HDCP 2.2 and Fast Switch which allows HDMI signal from any of its 6 sources to be routed to and displayed on any of its 2 connected HDMI displays simultaneously with View All Mode and Picture-in-picture (PIP) supported. Fast switching technology can greatly eliminate the time required by swapping or turning ON/OFF the connected displays. It supports 4Kx2K, 3D, 30-bit Deep Color, Hi-Def audio and other features defined by HDMI specifications.

The management of source/sink scenarios can be operated easily through on-panel buttons, IR remote control, RS-232 or Ethernet protocol.

2. APPLICATIONS

- Entertainment Room / Home Theater
- Show Room / Demo Room
- Lecture Room/Hall Presentation
- Show Room/Demo Room
- Public Commercial Display
- Information Board

3. PACKAGE CONTENTS

- 6 by 2 HDMI 4K UHD Matrix with HDCP2.2 and Fast Switching
- Remote Control with Battery
- Left & Right Rack Ears
- 5V/2.6A DC Power Adaptor
- IR Receiver Cable
- Operation Manual

4. SYSTEM REQUIREMENTS

Input source equipment such as Blu-ray/DVD/PS3 player or Set-Top-Box and output HDMI TV/Display and or audio amplifier with connection cables.

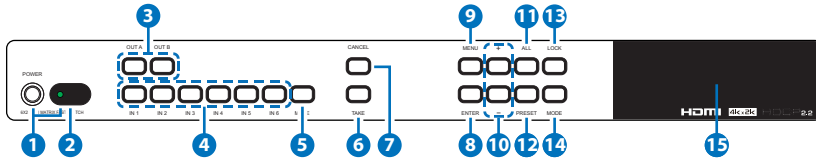
5. FEATURES

- HDMI with 3D & 4Kx2K supported, HDCP 2.2 and DVI compliant
- Supports 6 HDMI inputs and 2 HDMI outputs
- Displays any of 6 High-Definition sources on 2 HDTV displays simultaneously with fast switch
- When in Preview mode, the system will be treated as Switcher (2 HDMI output same images at the same time)
- In Preview mode, it support View All (1 Main video source and 5 Sub video sources) and PIP (1 Main video source and 1 Sub video source). 3D and 4K2K sources inputs are not supported
- Note: View All is TDM (Time Division Multiplexing display)
- 3DTV Pass-Through
- Supports HDTV resolutions up to 4Kx2K (3840x2160@24/25/30 & 4096x2160 @30Hz)
- Supports Optical audio extraction
- Supports Optical audio sampling rate output up to 192kHz
- Supports data rate from 300Mbps to 3Gbps and Deep Color up to 1080p 30-bit
- Supports individual EDID or common EDID
- Supports LPCM 2/5.1/7.1CH, Dolby Digital 2~5.1CH, DTS 2~5.1CH (Pass through), Dolby TrueHD and DTS-HD Master Audio
- Supports 6 sets of Matrix preset functions for input/output setting
- Input port HDCP support Standard and Apple mode. The Apple mode selection to guarantees the use of Apple devices
- Compliant with DVI source (Not supporting Deep color and Color space YCbCr 422/444)
- Supports OSD on output B under Preview Mode



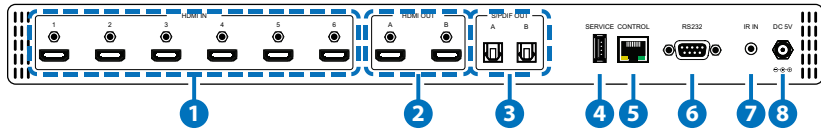
6. OPERATION CONTROLS AND FUNCTIONS

6.1 Front Panel



- 1 Power & LED:** Press the Power key to turn on the device and the LED will illuminated.
- 2 IR Window:** IR Receiver receives remote control signal from the remote control included in the package.
- 3 OUTPUT A ~ B:** Press these OUT buttons once along with one IN buttons to select input source for select output display.
- 4 IN 1~6:** Press these IN buttons to select an input from 6 input sources.
- 5 MUTE:** Press to mute audio source.
- 6 TAKE:** Press this button to confirm IN and OUT selection.
- 7 CANCEL:** Press this button to cancel IN and OUT selection.
- 8 ENTER:** Press this button to confirm selection.
- 9 MENU:** Press to enter Menu options.
- 10 +/-:** Press to move up / down under menu options.
- 11 ALL:** Press to select all outputs to display with one input source.
- 12 PRESET:** Press this button, the OLED menu will show preset, then select IN 1~6, press "TAKE" to confirm the selection or press "CANCEL" to deselect.
- 13 LOCK:** Press to lock all button functions on the panel, press and hold 5 seconds to rescission lock mode.
- 14 MODE:** Take mode / Real Time mode switch.
- 15 LCM:** Display input and output selection and menu options.

6.2 Rear Panel



- 1 **HDMI IN:** Connect from source equipment such as Blu-ray / DVD / PS3 player, Set-Top Box or any HDMI equipped source device for input signal sending.
- 2 **HDMI OUT:** Connect to HDMI TV / display or HD amplifier for output image and audio or audio display.
- 3 **S/PDIF OUT:** Connect to Audio sound system or Amplifier for digital output sound.
- 4 **SERVICE:** This is reserved for firmware update use only.
- 5 **CONTROL:** Connect to PC / Laptop with active internet service for Telnet / Web GUI control with RJ-45 terminated cable.
- 6 **RS232:** Connect to PC / Laptop to control the device.
- 7 **IR IN:** Connect the IR receiver which contented in the package for receive IR signal from the remote control.
- 8 **DC 5V:** Connect the adapter with power cord which included in the package and connect to AC wall outlet for power supply.

6.3 Remote Control

- ❶ **POWER:** Press Power key to turn on the device or set to standby mode.
- ❷ **OUT A~B:** Press these OUT buttons once then to select an input source for an output display.
- ❸ **TAKE:** Press this button to confirm IN and OUT selection.
- ❹ **MODE:** Press to switch to matrix or preview mode.

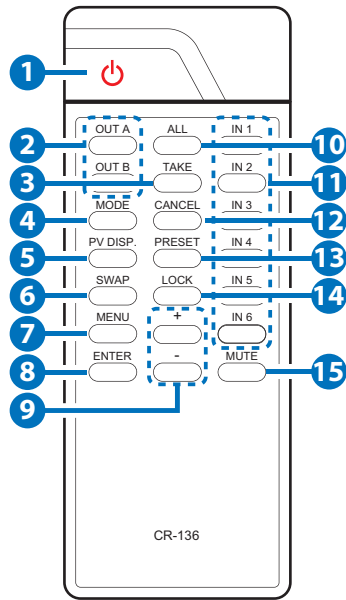
Matrix mode: Press OUT A or OUT B or both then select from INPUT 1~6 or MUTE to select input sources, press TAKE after selection to confirm or press CANCEL to undo.

Preview mode: Select VIEW ALL or PIP mode by entering Menu page.

Select to VIEW ALL: Press from INPUT 1~6 or MUTE to select input sources for main channel.

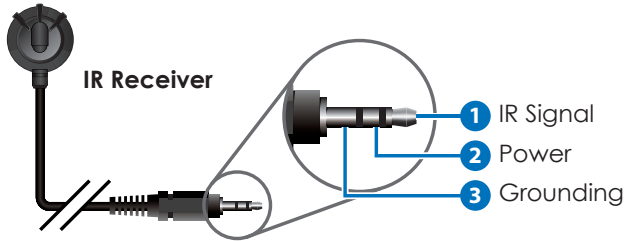
Select to PIP mode: Press from OUT A~B then Press from INPUT 1~6 or MUTE to select input as main or sub video sources, press ALL or SWAP to switch from main or sub video sources.

- ❺ **PV DISP.:** Press to switch Preview display on and off.
- ❻ **SWAP:** While in PIP mode, press to swap main or sub video source.
- ❼ **MENU:** Press to enter Menu options.
- ❽ **ENTER:** Press this button to confirm selection.
- ❾ **+/-:** Press to move up and down under menu options.
- ❿ **ALL:** Press to select all outputs to display with one input source.
- ⓫ **IN 1~6:** Press these IN buttons to select an input from 6 input sources.
- ⓬ **CANCEL:** Press this button to cancel IN and OUT selection.
- ⓭ **PRESET:** Press this button, the OLED menu will show preset, then select IN 1~6, press "TAKE" to confirm the selection or press "CANCEL" to deselect.



- 14 **LOCK:** Press to lock all button functions, press and hold 5 seconds to rescission lock mode.
- 15 **MUTE:** Press to mute audio source.

6.4 IR Pin Definitions



6.5 OSD Menu

Main Menu	Sub Menu	Description	Default
EDID Mode	All	All Input ports are using same EDID. In menu "EDID All", can select suitable EDID.	All
	Appoint	Each Input port can select individual EDID. In menu "EDID IN1~6" select suitable EDID.	
	Exit		
EDID All	Sink A	Copy Output A display EDID	8/2D/ PCM/1080P
	Sink B	Copy Output B display EDID	
	8/2D/ PCM/720P	Standard EDID. Content: deep color/2D3D/audio/ native resolution.	



Main Menu	Sub Menu	Description	Default
	8/2D/PCM/ AC3/720P	Standard EDID. Content: deep color/2D3D/audio/na- tive resolution.	
	8/2D/ PCM/1080P	Standard EDID. Content: deep color/2D3D/audio/na- tive resolution.	
	8/2D/PCM/ AC3/1080P	Standard EDID. Content: deep color/2D3D/audio/ native resolution.	
	8/2D/ PCM/4K2K	Standard EDID. Content: deep color/2D3D/audio/ native resolution.	
	8/2D/PCM/ AC3/4K2K	Standard EDID. Content: deep color/2D3D/audio/ native resolution.	
	8/2D/PCM/ Y420	Standard EDID. Content: deep color/2D3D/audio/ native resolution.	
	8/2D/PCM/ AC3/Y420	Standard EDID. Content: deep color/2D3D/audio/ native resolution.	
	Exit		
EDID IN1	Same as EDID All.	Select Input 1 EDID.	Same as EDID All.
EDID IN2	Same as EDID All.	Select Input 2 EDID.	Same as EDID All.

Main Menu	Sub Menu	Description	Default
EDID IN3	Same as EDID All.	Select Input 3 EDID.	Same as EDID All.
EDID IN4	Same as EDID All.	Select Input 4 EDID.	Same as EDID All.
EDID IN5	Same as EDID All.	Select Input 5 EDID.	Same as EDID All.
EDID IN6	Same as EDID All.	Select Input 6 EDID.	Same as EDID All.
Matrix Preset	Preset 1	IN/OUT default No.1.	A=1, B=2
	Preset 2	IN/OUT default No.2.	A=1, B=2
	Preset 3	IN/OUT default No.3.	A=1, B=2
	Preset 4	IN/OUT default No.4.	A=1, B=2
	Preset 5	IN/OUT default No.5.	A=1, B=2
	Preset 6	IN/OUT default No.6.	A=1, B=2
	Exit		
HDCP Input	IN1 Standard/Apple	Set IN1 in Standard/Apple mode.	Standard
	IN2 Standard/Apple	Set IN2 in Standard/Apple mode.	Standard
	IN3 Standard/Apple	Set IN3 in Standard/Apple mode.	Standard
	IN4 Standard/Apple	Set IN4 in Standard/Apple mode.	Standard
	IN5 Standard/Apple	Set IN5 in Standard/Apple mode.	Standard
	IN6 Standard/Apple	Set IN6 in Standard/Apple mode.	Standard
	Exit		

Main Menu	Sub Menu	Description	Default	
Preview Mode	View All	1 Main video source and 5 Sub video sources.	View All	
	PIP	1 Main video source and 1 Sub video source.		
	Exit			
Preview Position	View All	Top	Preview 5 Sub screens position.	Top Left
		Right	Preview 5 Sub screens position.	
		Bottom	Preview 5 Sub screens position.	
		Left	Preview 5 Sub screens position.	
	PIP	Top Left	Preview sub screen position.	
		Top Right	Preview sub screen position.	
		Bottom Right	Preview sub screen position.	
		Bottom Left	Preview sub screen position.	
	Exit			
	OSD Transparency	0~15	Preview OSD background transparency.	
Exit				
OSD Timeout	OSD Off	Preview without OSD info	OSD Always On	

Main Menu	Sub Menu	Description	Default
	5~20	Preview with OSD info show 5~20 Seconds then disappear	
	OSD Always On	Preview with OSD always on	
	Exit		
Network Setup	IP Mode	DHCP, Static	DHCP
	IP	Setup Static IP.	
	Mask	Setup Static Mask.	
	Gate	Setup Static Gateway	
	Do Re-Link	Re-Link After Setup Network, the System need to re-link.	
	Exit		
Network Status	Link	Network Status DHCP, Static or Not Linked.	
	IP	Get IP	
	Mask	Get Netmask	
	Gate	Get Gateway	
	MAC	System MAC	
	Exit		
Source Detection	IN1 On/Off, IN2 On/Off	Detect IN1, IN2 source with/without signal.	
	IN3 On/Off, IN4 On/Off	Detect IN3, IN4 source with/without signal.	

Main Menu	Sub Menu	Description	Default
	IN5 On/Off		
	IN6 On/Off	Detect IN5, IN6 source with/without signal.	
	Exit		
Sink A Info	Type, Manuf.	Detect and analysis Output A display's EDID. Content: Type(HDMI/DIV/VGA), Manufactory/Model number.	
	Native	Content: Native resolution.	
	Video Format	Content: deep color, 2D/3D, 4K2K.	
	Audio Format	Content: PCM, Bitstream, HBR.	
	Exit		
Sink B Info	Same as Sink A Info.	Detect and analysis Output B display's EDID.	
Firmware	FW Version	Display Model number & FW Version.	
	Update	FW Update.	
	Exit		
Factory Reset	Do Reset	Do System Reset.	
	Exit		
Exit			

6.6 RS-232 Protocols

Matrix			Remote Control	
PIN	Definition		PIN	Definition
1	NC		1	NC
2	Tx		2	Rx
3	Rx	▶	3	Tx
4	NC	◀	4	NC
5	GND		5	GND
6	NC		6	NC
7	NC		7	NC
8	NC		8	NC
9	NC		9	NC

Baud Rate: 115200bps

Data bit: 8 bits

Parity: None

Flow Control: None

Stop Bit: 1

6.7 Telnet and RS-232 Commands

Command Name	Description	Description of parameter
P0	Power Off (Standby)	NONE
P1	Power On	NONE
IPCONFIG	Display The Current IP Configure	NONE
SIPADDR X.X.X.X	Set Ethernet IP Address	X=0~255
SNETMASK X.X.X.X	Set Ethernet Net Mask	X=0~255
SGATEWAY X.X.X.X	Set Ethernet Gateway	X=0~255

Command Name	Description	Description of parameter
HTTPPORT N1	Set Http Port Number	N1=0~65535
TELNETPORT N1	Set Telnet port number	N1=0~65535
RSTIP	IP Configuration Set To <DHCP>	NONE
A N1	Set Output A Source to input N1	N1=1~6
B N1	Set Output BSource to input N1	N1=1~6
I N1	Set All Outputs Source to input N1	N1=1~6
EDIDMODE	Show EDID Mode	NONE
EDIDMODE N1	Set EDID Mode	N1=0(Appoint), 1(All)
EDIDALL	Show EDID Mode Source for All	NONE
EDIDALL N1	Set EDID Mode Source for All	N1=0(Sink A), 1(Sink B), 2(8/2D/PCM/720p), 3(8/2D/PCM/AC3/720p), 4(8/2D/PCM/1080p), 5(8/2D/PCM/AC3/1080p), 6(8/2D/PCM/4K2K), 7(8/2D/PCM/AC3/4K2K), 8(8/2D/PCM/Y420), 9(8/2D/PCM/AC3/Y420)
EDIDIN	Show Input EDID Source	NONE
EDIDIN N1	Show Input N1 EDID Source	N1=1~6

Command Name	Description	Description of parameter
EDIDIN N1 N2	Set Input N1 EDID Source	N1=1~6 N2=0(Sink A), 1(Sink B), 2(8/2D/PCM/720p), 3(8/2D/PCM/AC3/720p), 4(8/2D/PCM/1080p), 5(8/2D/PCM/AC3/1080p), 6(8/2D/PCM/4K2K), 7(8/2D/PCM/AC3/4K2K), 8(8/2D/PCM/Y420), 9(8/2D/PCM/AC3/Y420)
HDCPIN	Show All Input HDCP Status	NONE
HDCPIN N1	Show Input N1 HDCP Status	N1=1~6
HDCPIN N1 N2	Set Input N1 HDCP ON/OFF	N1=1~6 N2=0(OFF), 1(ON)
PRESET	Show All Preset Configure	NONE
PRESET N1	Set Preset N1 Source to Outputs	N1=1~6
PRESET N1 N2	Set Preset N1 Configure N2	N1=1~6 N2=AXBX (X=1~6)
PVMODE	Show preview mode	NONE
PVMODE N1	Set preview mode to N1	N1=0(View all), 1(PIP)
PVPOS	Show preview mode position	NONE

Command Name	Description	Description of parameter
PVPOS N1	Set preview mode to N1	In view all mode: N1=0(Top), 1(Right), 2(Bottom), 3(Left) In PIP mode: N1=0(Top), 1(Top right), 2(Bottom Right), 3(Bottom Left)
PVSRC	Show preview mode source select	None
PVSRC N1	In VIEWALL mode: Set Main Screen Source To Input N1 In PIP mode: Show N1 screen source select	In VIEWALL mode: N1=1~6 In PIP mode: N1=0(Main), 1(Sub)
PVSRC N1 N2	Set PIP mode main/sub screen source to input N2	N1=0(Main), 1(Sub) N2=1~6
OSDTRANS	Show OSD transparency	NONE
OSDTRANS N1	Set OSD transparency	N1=0~15
OSDTO	Show OSD time out	NONE
OSDTO N1	Set OSD time out	N1=0(OSD off), 1~16(5~20), 17(OSD always on)
SOURCEDET	Show All Input Signal	NONE
SOURCEDET N1	Show Input N1 Signal	N1=1~6
SINKINFO	Show All Output Information	NONE

Command Name	Description	Description of parameter
SINKINFO N1	Show Output N1 Information	N1=A~B Information: TYPE, Manuf. Name, Native Resolution, Color Depth, 3D, 4K2K, Audio Format
INNAME	Show all Input name	NONE
INNAME N1	Show Input N1 name	N1=1~6
INNAME N1 N2	Set Input N1 Name	N1=1~6 N2=ABCDEFGH(Max Length=8)
OUTNAME	Show all Output name	NONE
OUTNAME N1	Show Output N1 name	N1=A~B
OUTNAME N1 N2	Set Output N1 name	N1=A~B N2=ABCDEFGH(Max Length=8)
MATRIXMODE	Show matrix current mode	NONE
MATRIXMODE N1	Set matrix mode N1	N1=0(matrix), 1 (preview)
VER	Show Device Firmware version	NONE
REBOOT	System Reboot	NONE
HELP(?)	Show Command list	NONE
HELP(?) N	Show Command description	N=Command name

Note: All the RS-232 command will be not executed unless followed with a carriage return. All commands are insensitive.

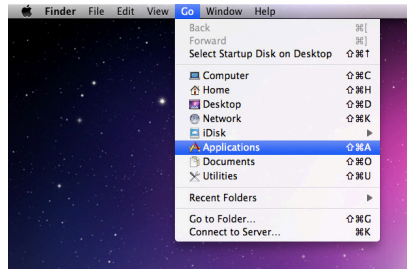
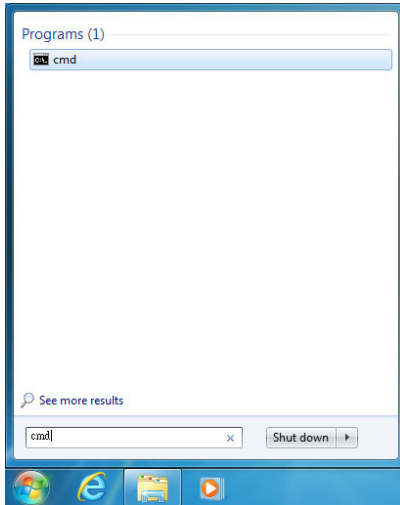


6.8 Telnet Control

To access the telnet control in Windows 7, click on 'Start' menu and type "cmd" in the Search field then press enter.

Under Windows XP go to the 'Start' menu and click on "Run", type "cmd" and press enter.

Under Mac OS X, go to Go→Application→Utilities→Terminal



Once in the command line interface (CLI) type "telnet", then the IP address of the unit and port "23" and hit enter.

```
Microsoft Windows [Version 6.1.7601]
Copyright (c) 2009 Microsoft Corporation. All rights reserved.

C:\Users\Administrator>telnet 192.168.5.80 23
```

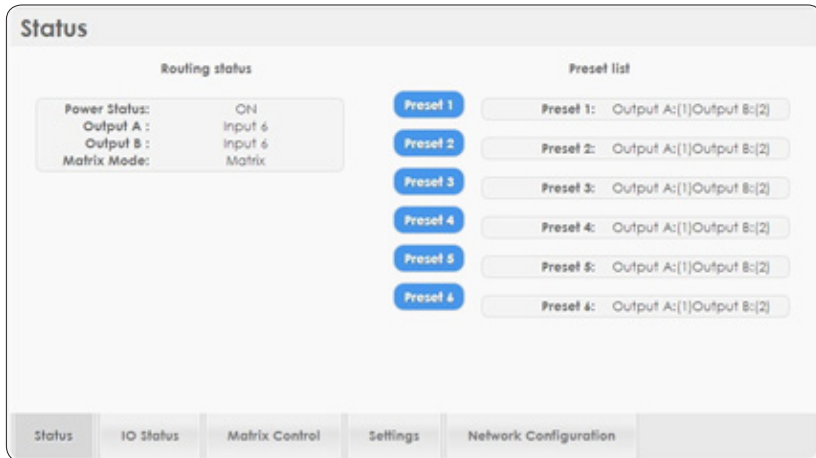
Type HELP or ? to bring out all the commands.

```
Welcome to TELNET.  
??  
  
P0  
P1  
IPCONFIG  
$IPADDR  
$NETMASK  
$GATEWAY  
RSTIP  
A  
B  
I  
EDIDMODE  
EDIDALL  
EDIDIN  
HDCPIN  
PRESET  
PUMODE  
PUPOS  
PUSRC  
OSDTRANS  
OSDIO  
SOURCEDET  
SINKINFO  
INNAME  
OUTNAME  
MATRIXMODE  
UER  
REBOOT  
CUSTCODE  
?  
HELP  
>
```

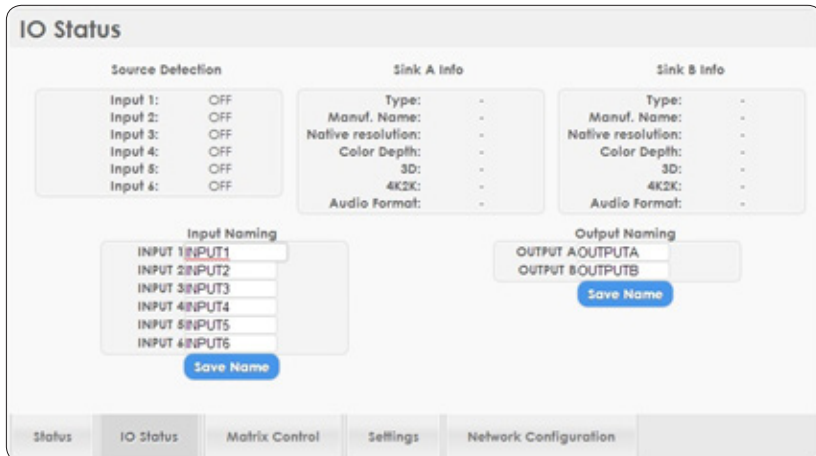


6.9 Web GUI Control

On a PC/Laptop which is connected to an active network system, open a web browser and type device's IP address (available from LCM monitor or OSD menu) on the web address entry bar. The browser will display the device's Status, IO Status, Matrix Control, and Network Configuration pages for users to control.



Click on IO Status for input and output selection.



Click on Matrix Control for outputs and EIDID selections.

Matrix Control

Routing	EDID
Power ON	EDID Mode APPOINT
Output A From Input 1	EDID IN1 8/2D/PCM/1080p
Output B From Input 2	EDID IN2 8/2D/PCM/1080p
Output All From Select	EDID IN3 8/2D/PCM/1080p
Device Mode Matrix	EDID IN4 8/2D/PCM/1080p
EDID IN5 8/2D/PCM/1080p	EDID IN6 8/2D/PCM/1080p
EDID IN7 8/2D/PCM/1080p	EDID IN8 8/2D/PCM/1080p

Factory Reset

Status IO Status **Matrix Control** Settings Network Configuration

Click on Settings to set each input's HDCP control and preset configuration.

Settings

HDCP Control	Preset Configuration
INPUT 1 HDCP Enable	PRESET 1 OUTPUT A: Input 1 OUTPUT B: Input 2
INPUT 2 HDCP Enable	PRESET 2 OUTPUT A: Input 1 OUTPUT B: Input 2
INPUT 3 HDCP Enable	PRESET 3 OUTPUT A: Input 1 OUTPUT B: Input 2
INPUT 4 HDCP Enable	PRESET 4 OUTPUT A: Input 1 OUTPUT B: Input 2
INPUT 5 HDCP Enable	PRESET 5 OUTPUT A: Input 1 OUTPUT B: Input 2
INPUT 6 HDCP Enable	PRESET 6 OUTPUT A: Input 1 OUTPUT B: Input 2

OSD Configuration

Transparency 5

Timeout Always On

Preview Configuration

Preview Mode View All

Preview Position Top

Status IO Status Matrix Control **Settings** Network Configuration

Click on Network Configuration to set the device's IP configuration. Once the changes are saved the system will reset the IP address on the device automatically and user will need to re-enter the IP address to continue the Web GUI function.

Network Configuration

MAC Address: F7-8F-01-14-00-00

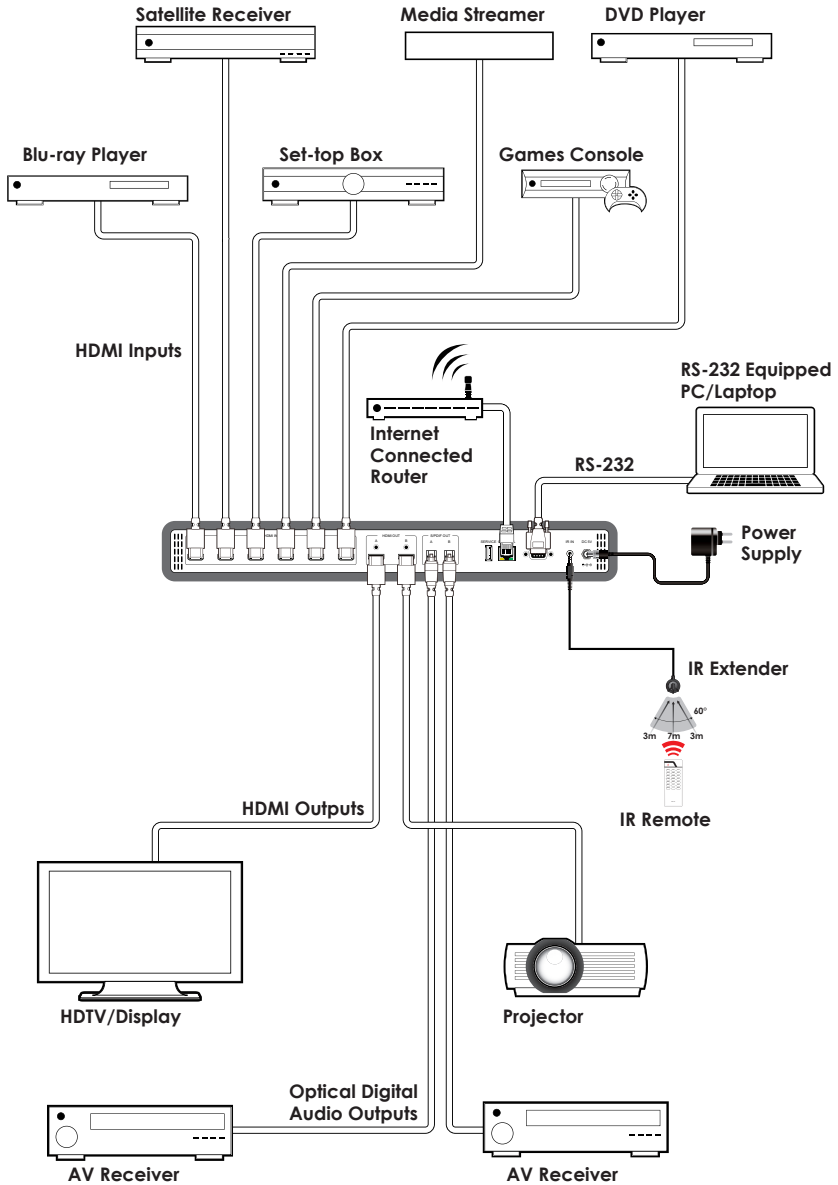
Address Type: **STATIC** ▼

IP Address: 192.168.5.216
Net Mask: 255.255.255.0
Default Gateway: 192.168.5.254
Http Port: 80

Save

Status IO Status Matrix Control Settings **Network Configuration**

7. CONNECTION DIAGRAM





8. SPECIFICATIONS

Video Bandwidth	300MHz/9Gbps
Input Ports	6 x HDMI 1 x USB(Service) 1 x RS232 1 x RJ45(Control) 1 x IR
Output Ports	2 x HDMI 2 x Optical(S/PDIF)
Supported Resolutions	480i~1080p@50/60 4K2K@24/25/30 4K2K@50/60(YUV 420) VGA~WUXGA(RB)
IR Frequency	30~50kHz
Baud Rate	Up to 115200 bps
Power Supply	5VDC/2.6A (US/EU standards, CE/FCC/ UL certified)
ESD Protection	Human Body model: ±8kV (air-gap discharge) ±4kV (contact discharge)
Chassis Material	Metal
Silkscreen color	Black
Dimensions	438mm (W) x 269mm (D) x 44mm (H) (Jacks excluded) 482mm (W) x 274mm (D) x 49mm (H) (Jacks included)
Weight	1892g
Operating Temperature	0°C~40°C / 32°F ~ 104°F
Storage temperature	-20°C~60°C / -4°F ~ 140°F
Relative Humidity	20~90% RH (no condensation)
Power Consumption	11.44w

DVI and HDMI Supported Resolutions	Input	Output
640x480@60	✓	✓
640x480@72	✓	✓
640x480@75	✓	✓
720x480@60	✓	✓
720x576p@50	✓	✓
800x600@60	✓	✓
800x600@72	✓	✓
800x600@75	✓	✓
1024x768@60	✓	✓
1024x768@70	✓	✓
1024x768@75	✓	✓
1280x720@50	✓	✓
1280x720@60	✓	✓
1280x720p@60	✓	✓
1280x768@60	✓	✓
1280x800@60	✓	✓
1280x1024@60	✓	✓
1360x768@60	✓	✓
1600x1200@60	✓	✓
1920x1080i@50	✓	✓
1920x1080i@60	✓	✓
1920x1080p@24	✓	✓
1920x1080p@25	✓	✓
1920x1080p@30	✓	✓
1920x1080p@50	✓	✓



DVI and HDMI Supported Resolutions	Input	Output
1920x1080p@60	✓	✓
1920x1200@60(RB)	✓	✓
3840x2160@30	✓	✓
4096x2160@24	✓	✓



CYPRESS TECHNOLOGY CO., LTD
Home page: <http://www.cypress.com.tw>

MPM-UA6H2HFS



CDPS-6H2HFS

6 by 2 HDMI 4Kx2K Matrix



Operation Manual



DISCLAIMERS

The information in this manual has been carefully checked and is believed to be accurate. Cypress Technology assumes no responsibility for any infringements of patents or other rights of third parties which may result from its use.

Cypress Technology assumes no responsibility for any inaccuracies that may be contained in this document. Cypress also makes no commitment to update or to keep current the information contained in this document.

Cypress Technology reserves the right to make improvements to this document and/or product at any time and without notice.

COPYRIGHT NOTICE

No part of this document may be reproduced, transmitted, transcribed, stored in a retrieval system, or any of its part translated into any language or computer file, in any form or by any means—electronic, mechanical, magnetic, optical, chemical, manual, or otherwise—without express written permission and consent from Cypress Technology.

© Copyright 2012 by Cypress Technology.

All Rights Reserved.

Version 1.0 October 2009

TRADEMARK ACKNOWLEDGMENTS

All products or service names mentioned in this document may be trademarks of the companies with which they are associated.



SAFETY PRECAUTIONS

Please read all instructions before attempting to unpack, install or operate this equipment and before connecting the power supply.

Please keep the following in mind as you unpack and install this equipment:

- Always follow basic safety precautions to reduce the risk of fire, electrical shock and injury to persons.
- To prevent fire or shock hazard, do not expose the unit to rain, moisture or install this product near water.
- Never spill liquid of any kind on or into this product.
- Never push an object of any kind into this product through any openings or empty slots in the unit, as you may damage parts inside the unit.
- Do not attach the power supply cabling to building surfaces.
- Use only the supplied power supply unit (PSU). Do not use the PSU if it is damaged.
- Do not allow anything to rest on the power cabling or allow any weight to be placed upon it or any person walk on it.
- To protect the unit from overheating, do not block any vents or openings in the unit housing that provide ventilation and allow for sufficient space for air to circulate around the unit.

REVISION HISTORY

VERSION NO.	DATE DD/MM/YY	SUMMARY OF CHANGE
VR0	14/09/15	Preliminary Release

CONTENTS

1. Introduction.....	1
2. Applications.....	1
3. Package Contents	1
4. System Requirements.....	1
5. Features.....	2
6. Operation Controls and Functions.....	3
6.1 Front Panel.....	3
6.2 Rear Panel.....	5
6.3 OSD Menu	6
6.4 Remote Control.....	11
6.5 RS-232 Protocols	12
6.6 Telnet & RS-232 Commands.....	13
6.7 Telnet Control	18
6.8 Web GUI Control.....	20
7. Connection Diagram	22
8. Specifications	23
9. Acronyms	25



1. INTRODUCTION

The 6 by 2 HDMI matrix which allows HDMI signal from any of its six sources to be routed to and displayed on any of its two connected HDMI displays simultaneously with View All Mode and Picture-in-picture (PIP) supported. With fast switching technology the device can greatly eliminate the time required by swapping or turning ON/OFF the connected displays. It supports 4Kx2K, 3D, 36-bit Deep Color, Hi-Def lossless audio and other features defined by HDMI specifications. The management of source/sink scenarios can be operated easily through on-panel buttons, IR remote control, RS-232 or Ethernet protocol.

2. APPLICATIONS

- Home Theater/Entertainment
- Lecture Room/Hall Presentation
- Show Room/Demo Room
- Public Commercial Display
- Information Board

3. PACKAGE CONTENTS

- 6 by 2 HDMI 4Kx2K Matrix
- Remote Control with Battery
- Left & Right Rack Ears
- 5V/2.6A DC Power Adaptor
- IR Receiver Cable
- Operation Manual

4. SYSTEM REQUIREMENTS

Input source equipments such as Blu-ray/DVD/PS3 player or Set-Top-Box and output HDMI TV/Display and or audio amplifier with connection cables.

5. FEATURES

- HDMI with 3D & 4Kx2K supported, HDCP and DVI compliant
- Support six HDMI inputs and two HDMI outputs
- Displays any of six (6) High-Definition sources on two (2) HDTV displays simultaneously with fast switch
- When in Preview mode, the system will be treated as Switcher (two HDMI output same images at the same time)
- In Preview mode, it support View All (1 Main video source and 5 Sub video sources) and PIP (1 Main video source and 1 Sub video source). 3D and 4K2K sources inputs are not supported for sub-windows

Note: View All is TDM (Time Division Multiplexing display)

- 3DTV Pass-Through
- Supports HDTV resolutions up to 4Kx2K (3840x2160@24/25/30 & 4096x2160@30Hz, 50/60 @YUV420)
- Supports Optical audio extraction
- Supports Optical audio sampling rate output up to 192kHz
- Supports data rate from 300Mbps to 3Gbps and Deep Color up to 1080p 36-bit
- Supports individual EDID or common EDID
- Supports LPCM 2/5.1/7.1CH, Dolby Digital 2~5.1CH, DTS 2~5.1CH (Pass through), Dolby TrueHD and DTS-HD Master Audio
- Supports 6 sets of Matrix preset functions for input/output setting
- Input port HDCP support Standard and Apple mode. The Apple mode selection to guarantees the use of Apple devices
- Compliant with DVI source

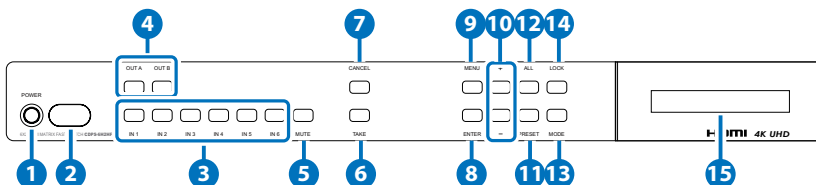
Note: Support HDMI to DVI conversion when HDMI source is non-deep color and color space RGB.

Not support HDMI to DVI conversion when HDMI source is deep color and color space YCbCr 444/422

- Supports OSD on output B under Preview Mode

6. OPERATION CONTROLS AND FUNCTIONS

6.1 Front Panel



- 1 POWER:** Press this button to turn ON the device and the LED will illuminated.
- 2 IR Window:** This IR Receiver receives the IR signal from the package included remote control only.
- 3 IN 1~6:** Press these IN buttons to select an input from the 6 input sources.
- 4 OUT A/B:** Press these buttons once a time along with an IN buttons to select an input source for an output display. i.e. OUT A→ IN1→TAKE or OUT B→ IN6→TAKE.
- 5 MUTE:** Press this button to mute both video and audio on OUT A or B.
- 6 TAKE:** Press this button to confirm the selection of an IN and an OUT button.
- 7 CANCEL:** Press this button to cancel the IN/OUT selection.
- 8 ENTER:** Press to confirm the selection.
- 9 MENU:** Press to enter into the menu.
- 10 +/-:** Press these buttons to move up/down under menu selection.
- 11 PRESET:** (PV MUTE: Preview ON/OFF)
 - When select the MODE in Preview mode, press the button to turn ON/OFF the Sub video windows.
 - When select the MODE in Matrix mode, press “PRESET” to switch between Normal and Preset mode.
 - ✓ Normal mode:
Press OUT A or OUT B or ALL and then press IN 1~6 or MUTE to select the input sources. After the selection, press “TAKE” to confirm the selection or press “CANCEL” to cancel the selection.

- ✓ Preset mode:
Press "PRESET", the OLED menu will show Preset then select IN 1~6. Preset 1~6 after the selection, press "TAKE" to confirm the selection or press "CANCEL" to cancel the selection.

12 All: (SWAP)

Press this button to select all outputs to display with an input source. When in PIP mode, press to swap between Main video source and Sub video source.

13 MODE: Press to switch between Preview or Matrix mode.

- Preview mode: From MENU option select View All (1 Main video sources and 5 Sub video sources) or PIP mode (1 Main video sources and 1 Sub video sources).

Note: Under Preview mode, OSD display on output B only.

- ✓ View All: Press IN 1~6 or MUTE to select the Main channel. From OLED menu select "Preview Position" for Sub screens position.

Note: All sub screens will be display rotatively for about 0.5 second and those screens that are not rotatived will be freezed.

- ✓ PIP: Press OUT A (Main) or OUT B, then press IN1~6 or MUTE to select Main or Sub video source. Press "ALL" or Remote Control " SWAP" to exchange Main/Sub video source.

Note: When both Main and Sub select the same input source, Sub will be muted.

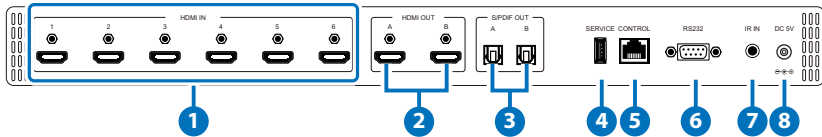
- Matrix mode: Press OUT A or OUT B or OUT A & B and then press IN 1~6 or MUTE to select the input sources. After the selection, press "TAKE" to confirm the selection or press "CANCEL" to cancel the selection.

14 LOCK: Press this button to lock all button functions on the panel. Press 3 seconds to relieve the lock function.

15 LCM: Displaying Input and Outputs selection and menu selection.



6.2 Rear Panel



- 1 HDMI IN:** Connect from source equipments such as Blu-ray/DVD/ PS3 players, Set-Top-Box or any HDMI equipped source device for input signal sending.
- 2 HDMI OUT:** Connect to HDMI TV/display or HD Amplifier for output image and or audio display.
- 3 S/PDIF OUT:** Connect to audio sound system or Amplifier for digital output sound.
- 4 SERVICE:** This slot is reserved for firmware update use only.
- 5 CONTROL:** Connect from PC/Laptop with active internet service for Web GUI control with RJ-45 terminated cable.
- 6 RS232:** Connect from PC/Laptop for RS-232 command sending to control the device.
- 7 IR IN:** Connect the IR Receiver included in the package for IR signal receive from the included remote control.
- 8 DC 5V:** Connect the adaptor with power cord included in the package and connect to AC wall outlet for power supply.

6.3 OSD Menu

Main Menu	Sub Menu	Description	Default
EDID Mode	All	All Input port is using same EDID. In menu "EDID All", can select suitable EDID.	All
	Appoint	Each Input port can select individual EDID. In menu "EDID IN1~6" select suitable EDID.	
	Exit		
EDID All	Sink A	Copy Output A display EDID	8/2D/ PCM/1080p
	Sink B	Copy Output B display EDID	
	8/2D/ PCM/720p	Standard EDID, Content: deep color/2D3D/audio/ native resolution	
	8/2D/PCM/ AC3/720p	Standard EDID, Content: deep color/2D3D/audio/ native resolution	
	8/2D/ PCM/1080p	Standard EDID, Content: deep color/2D3D/audio/ native resolution	
	8/2D/PCM/ AC3/1080p	Standard EDID, Content: deep color/2D3D/audio/ native resolution	
	8/2D/ PCM/4K2K	Standard EDID, Content: deep color/2D3D/audio/ native resolution	



Main Menu	Sub Menu	Description	Default
	8/2D/PCM/ AC3/4K2K	Standard EDID, Content: deep color/2D3D/audio/ native resolution	
	8/2D/PCM/ Y420	Standard EDID, Content: deep color/2D3D/audio/ native resolution	
	8/2D/PCM/ AC3/Y420	Standard EDID, Content: deep color/2D3D/audio/ native resolution	
	Exit		
EDID IN1	Same EDID All	Select Input 1's EDID	Same EDID All
EDID IN2	Same EDID All	Select Input 2's EDID	Same EDID All
EDID IN3	Same EDID All	Select Input 3's EDID	Same EDID All
EDID IN4	Same EDID All	Select Input 4's EDID	Same EDID All
EDID IN5	Same EDID All	Select Input 5's EDID	Same EDID All
EDID IN6	Same EDID All	Select Input 6's EDID	Same EDID All
Matrix Preset	Preset 1	IN/OUT default No.1	A=1 , B=2
	Preset 2	No.2	A=1 , B=2
	Preset 3	No.3	A=1 , B=2
	Preset 4	No.4	A=1 , B=2
	Preset 5	No.5	A=1 , B=2
	Preset 6	N0.6	A=1 , B=2
	Exit		
HDCP Input	IN1 Standard/ Apple	Set IN1 in Apple/ Standard mode	Standard
	IN2 Standard /Apple	Set IN2 in Apple/ Standard mode	Standard
	IN3 Standard /Apple	Set IN3 in Apple/ Standard mode	Standard
	IN4 Standard /Apple	Set IN4 in Apple/ Standard mode	Standard

Main Menu	Sub Menu	Description	Default	
	IN5 Standard /Apple	Set IN5 in Apple/ Standard mode	Standard	
	IN6 Standard /Apple	Set IN6 in Apple/ Standard mode	Standard	
	Exit			
Preview Mode	View All	1 Main video source and 5 Sub video source	View All	
	PIP	1 Main video source and 1 Sub video source		
	Exit			
Preview Position	View ALL	Top	Preview 5 Sub screens position	Top
		Right	Preview 5 Sub screens position	
		Bottom	Preview 5 Sub screens position	
		Left	Preview 5 Sub screens position	
	PIP	Top Left	Preview Sub screen position	Top Left
		Top Right	Preview Sub screen position	
		Bottom Right	Preview Sub screen position	
		Bottom Left	Preview Sub screen position	
	Exit			
	OSD Transparency	0~15	Preview OSD background transparency	6
Exit				

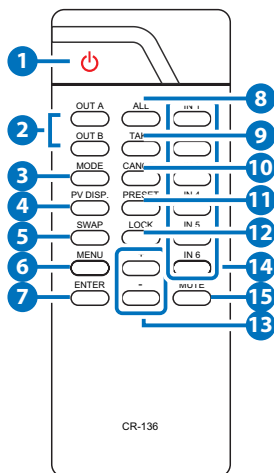
Note: Under Preview mode, OSD display on output B only.

Main Menu	Sub Menu	Description	Default
OSD Timeout	OSD Off	Preview without OSD Info	OSD Always On
	5~20	Preview with OSD Info 5~20 sec and disappear	
	OSD Always On	Preview with OSD Info remain ON	
	Exit		
Network Setup	IP Mode	DHCP , Static	DHCP
	IP	Setup Static IP	192.168.5.83
	Mask	Setup Static Netmask	255.255.255.0
	Gate	Setup Static Gateway	192.168.5.254
	Do Re-Link	Re-Link. After setup Network, the system need to re-link	---
	Exit		
Network Status	Link	Network status DHCP,Static or Not Linked	---
	IP	Get IP	---
	Mask	Get Netmask	---
	Gate	Get Gateway	---
	MAC	System MAC Address	---
	Exit		
Source Detection	IN1 On/Off , IN2 On/Off	IN1 , IN2 detect source with/without the signal	---
	IN3 On/Off , IN4 On/Off	IN3 , IN4 detect source with/without the signal	

Main Menu	Sub Menu	Description	Default
	IN5 On/Off , IN6 On/Off	IN5 , IN6 detect source with/without the signal	
	Exit		
Sink A Info	Type, Manuf.	Detect and Analysis Output A display's EDID Content: type(HDMI/ DVI/VGA), Manufactory/Model number	---
	Native	Content: native resolution	
	Video Format	Content: deep color, 2D or 3D, 4K2K	
	Audio Format	Content:PCM, BitStream, HBR	
	Exit		
Sink B Info	Same Sink A Info	Detect and Analysis Output B display's EDID	---
Firmware	FW Version	Display the model number and FW version	---
	Update	FW Update	
	Exit		
Factory Reset	Do Reset	Do system Reset	---
	Exit		
Exit			

6.4 Remote Control

- 1 **POWER:** Press this button to switch the system ON/OFF.
- 2 **OUT A/B:** Press these buttons once a time along with an IN buttons to select an input source for an output display.
- 3 **MODE:** Press to switch between Preview or Matrix mode.
 - Preview mode: From MENU option select View All (1 Main video sources and 5 Sub video sources) or PIP mode (1 Main video sources and 1 Sub video sources).
 - ✓ View All: Press IN 1~6 or MUTE to select the Main channel. From OLED menu select "Preview Position" for Sub screens position.
 - ✓ PIP: Press OUT A (Main) or OUT B, then press IN1~6 or MUTE to select Main or Sub video source. Press "ALL" or Remote Control "SWAP" to change Main/Sub video source.
 - Matrix mode: Press OUT A or OUT B or OUT A & B and then press IN 1~6 or MUTE to select the input sources. After the selection, press "TAKE" to confirm the selection or press "CANCEL" to cancel the selection.
- 4 **PV DISP:** Press to set ON/OFF the Preview Display.
- 5 **SWAP:** In PIP mode, press to swap Main/Sub video source.
- 6 **MENU:** Press to enter into the menu.
- 7 **ENTER:** Press to confirm the selection.
- 8 **ALL:** Press this button to select all outputs to display with an input source.
- 9 **TAKE:** Press this button to confirm the selection of an IN and an OUT button.
- 10 **CANCEL:** Press this button to cancel the IN/OUT selection.
- 11 **PRESET:**
 - When select the MODE in Matrix mode, press "PRESET" to switch between Normal and Preset mode.



- ✓ Normal mode:
Press OUT A or OUT B or ALL and then press IN 1~6 or MUTE to select the input sources. After the selection, press "TAKE" to confirm the selection or press "CANCEL" to cancel the selection.
- ✓ Preset mode:
Press "PRESET", the OLED menu will showing Preset and select IN 1~6. After preset 1~6, press "TAKE" to confirm the selection or press "CANCEL" to cancel the selection.

- 12 LOCK:** Press this button to lock all button functions on the panel. Press 3 seconds to relieve the lock function.
- 13 +/-:** Press these buttons to move up/down under menu selection.
- 14 IN1~6:** Press the IN buttons to select an input from the 6 input sources.
- 15 MUTE:** Press this button to mute both video and audio on the selected OUT A/B selected.

6.5 RS-232 Protocols

CDPS-6H2HFS			Remote Control	
PIN	Assignment		PIN	Assignment
1	NC		1	NC
2	Tx		2	Rx
3	Rx		3	Tx
4	NC	▶	4	NC
5	GND	◀	5	GND
6	NC		6	NC
7	NC		7	NC
8	NC		8	NC
9	NC		9	NC

Baud Rate: 115200bps
 Data bit: 8 bits
 Parity: None
 Flow Control: None
 Stop Bit: 1



6.6 Telnet & RS-232 Commands

Command Name	Description	Description of Parameter
P0	POWER OFF	NONE
P1	POWER ON	NONE
IPCONFIG	DISPLAY THE CURRENT IPCONFIG	NONE
SIPADDR XXX.XXX. XXX.XXX	SET ETHERNET IP AD- DRESS	XXX=0~255
SNETMASK XXX. XXX.XXX.XXX	SET ETHERNET NETMASK	XXX=0~255
SGATEWAY XXX. XXX.XXX.XXX	SET ETHERNET GATEWAY	XXX=0~255
HTTPPORT	SET CURRENT HTTP PORT NUMBER	NONE
HTTPPORT N	SET CURRENT HTTP PORT NUMBER TO N	N=0~65535
TELNETPORT	SHOW CURRENT TELNET PORT NUMBER	NONE
TELNETPORT N	SET CURRENT TELNET PORT NUMBER TO N	N=0~65535
RSTIP	IP CONFIGURATION RESET TO <DHCP>	NONE
A N	SET OUTPUT A SOURCE	N=1~6 inputs, 0 for Mute
B N	SET OUTPUT B SOURCE	N=1~6, 0 for Mute
I N	SET ALL OUTPUTS SOURCE	N=1~6, 0 for Mute
EDIDMODE	SHOW EDID MODE	NONE
EDIDMODE N	SET EDID MODE	N=(0)Appoint (1)All
EDIDALL	SHOW EDID MODE SOURCE FOR ALL	NONE

Command Name	Description	Description of Parameter
EDIDALL N	SET EDID CONTENT FOR ALL	N=0~9 (0)Sink A, (1)Sink B, (2) 8/2D/PCM/720p, (3)8/2D/PCM/AC3/720p, (4) 8/2D/PCM/1080p, (5)8/2D/PCM/ AC3/1080p, (6)8/2D/ PCM/AC3/4K2K, (7)8/2D/ PCM/AC3/4K2K, (8)8/2D/ PCM/Y420, (9)8/2D/ PCM/AC3/Y420
EDIDIN	SHOW ALL INPUT EDID SOURCE	NONE
EDIDIN N1	SHOW INPUT N1 EDID SOURCE	N1=1~6
EDIDIN N1 N2	SET INPUT N1 EDID SOURCE	N1=1~6 N2=0~9 (0)Sink A, (1)Sink B, (2) 8/2D/PCM/720p, (3)8/2D/PCM/AC3/720p, (4) 8/2D/PCM/1080p, (5)8/2D/PCM/ AC3/1080p, (6)8/2D/ PCM/AC3/4K2K, (7)8/2D/ PCM/AC3/4K2K, (8)8/2D/ PCM/Y420, (9)8/2D/ PCM/AC3/Y420
HDCPIN	SHOW ALL INPUT HDCP STATUS	NONE
HDCPIN N1	SHOW INPUT N1 HDCP STATUS	N1=1~6
HDCPIN N1 N2	SET INPUT N1 HDCP ON/OFF	N1=1~6 N2=(0)OFF (ON)

Command Name	Description	Description of Parameter
PRESET	SHOW ALL PRESET CONFIG	NONE
PRESET N1	RECALL PRESET N1	N1=1~6
PRESET N1 N2	SET PRESET N1 CONFIGURE	N1=1~6 N2=AXBX (X=1~6)
PVMODE	SHOW PREVIEW MODE	NONE
PVMODE N1	SET PREVIEW MODE	N1=(0)View All/(1)PIP
PVPOS	SHOW PREVIEW POSITION	NONE
PVPOS N1	SET PREVIEW POSITION	N1=0~3 In View All mode: (0) Top (1) Right (2) Bottom (3) Left In PIP Mode: (0) Top Left (1) Top Right (2) Bottom Right Bottom Left
PVSRC	SHOW PREVIEW SOURCE SELECT	NONE
PVSRC N1	In View All Mode: SET MAIN SCREEN SOURCE	N1= INPUT 1~6
	In PIP Mode: SHOW MAIN/SUB SCREEN SOURCE	N1= (0)MAIN/(1)SUB

Command Name	Description	Description of Parameter
PVSRC N1 N2	In View All Mode: NOT SUPPORT	NONE
	In PIP Mode: SET MAIN/SUB SCREEN SOURCE	N1=(0)MAIN/(1)SUB N2=INPUT 1~6
OSDTRANS	SHOW OSD Transparency	NONE
OSDTRANS N1	SET OSD Transparency	N1=0~15 (0)completely transparent (15)opaque
OSDTO	SHOW OSD TIME OUT	NONE
OSDTO N1	SET OST TIME OUT	N1=0~17 (0)off (1~16)5~20s (17)always on
SOURCEDET	SHOW ALL INPUT SIGNAL	NONE
SOURCEDET N1	SHOW INPUT N1 SIGNAL	N1=1~6
SINKINFO	SHOW ALL OUTPUT INFORMATION	NONE
SINKINFO N1	SHOW OUTPUT N1 INFORMATION	N1=A/B
INNAME	SHOW ALL INPUT NAME	NONE
INNAME N1	SHOW INPUT N1 NAME	N1=1~6
INNAME N1 N2	SET INPUT N1 NAME	N1=1~6 N2=ABCDEFGH
OUTNAME	SHOW ALL OUTPUT NAME	NONE



Command Name	Description	Description of Parameter
OUTNAME N1	SHOW OUTPUT N1 NAME	N1=A/B
OUTNAME N1 N2	SET OUTPUT N1 NAME	N1=A/B N2=ABCDEFGH
MATRIXMODE	SHOW MATRIX CURRENT MODE	NONE
MATRIXMODE N1	SET MATRIX MODE	N1=(0)Matrix/(1)Preview
VER	SHOW DESCRIPT OF UNIT	NONE
REBOOT	SYSTEM REBOOT	NONE
?	SHOW COMMAND LIST	NONE
HELP	SHOW COMMAND LIST	NONE
HELP N	SHOW DESCRIPT OF COMMAND	N : command name Ex: HELP VER

Note: All the RS-232 command will be not executed unless followed with a carriage return. All commands are case-sensitive.

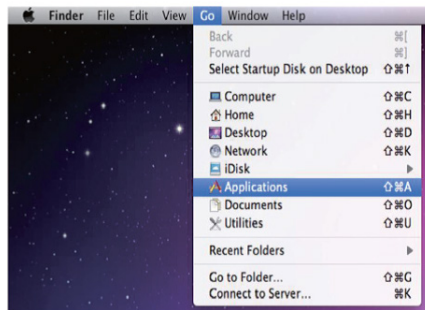
6.7 Telnet Control

Before attempting to use the telnet control, please ensure that both the Matrix (via the 'CONTROL' port) and the PC/Laptop are connected to the active networks.

To access the telnet control in Windows 7, click on the 'Start' menu and type "cmd" in the Search field then press enter

Under Windows XP go to the 'Start' menu and click on "Run", type "cmd" with then press enter.

Under Mac OS X, go to Go→Applications→Utilities→Terminal See below for reference.



Once in the command line interface (CLI) type "telnet", then the "IP address" of the unit and hit enter. Only when the Telnet port (device port) is not set to 23, the number "(device port)" then needs to be entered after

IP address (device IP) and before hit enter.

```
Administrator: C:\Windows\system32\cmd.exe
Microsoft Windows [Version 6.1.7600]
Copyright (c) 2009 Microsoft Corporation. All rights reserved.

C:\Users\CYP>telnet 192.168.5.80_
```

This will bring us into the device which we wish to control. Type "HELP" to list the available commands.

```
Telnet 192.168.5.83

Welcome to TELNET.
>hheelppp0          : POWER OFF
P1                  : POWER ON
IPCONFIG            : DISPLAY THE CURRENT IPCONFIG
SIPADDR             : SET ETHERNET IP ADDRESS
SNETMASK            : SET ETHERNET NETMASK
SGATEWAY            : SET ETHERNET GATEWAY
HTTPPORT           : SET HTTP PORT NUMBER
TELNETPORT         : SET TELNET PORT NUMBER
RSTIP              : IP CONFIGURATION RESET TO <DHCP>
A                  : SET OUTPUT A SOURCE
B                  : SET OUTPUT B SOURCE
I                  : SET ALL OUTPUTS SOURCE
EDIDMODE           : EDID MODE
EDIDALL            : EDID MODE SOURCE FOR ALL
EDIDIN             : INPUT EDID SOURCE
HDCPIN             : INPUT HDCP STATUS
PRESET             : MATRIX PRESET CONFIGURATION
PUMODE             : PREVIEW MODE SELECT
PUPOS              : PREVIEW MODE POSITION TYPE
PUSRC              : PREVIEW MODE SOURCE SELECT
OSDTRANS          : OSD TRANSPARENCY
OSDIO              : OSD TIME OUT
SOURCEDET         : SOURCE SIGNAL DETECT <ON/OFF>
SINKINFO          : SINK INFORMATION
INNAME            : INPUT NAME
OUTNAME           : OUTPUT NAME
MATRIXMODE        : MATRIX/PREVIEW MODE SWITCH
UER               : SHOW UNIT FIRMWARE VERSION
REBOOT            : SYSTEM REBOOT
?                : SHOW DESCRIPT OF COMMAND
HELP              : SHOW DESCRIPT OF COMMAND

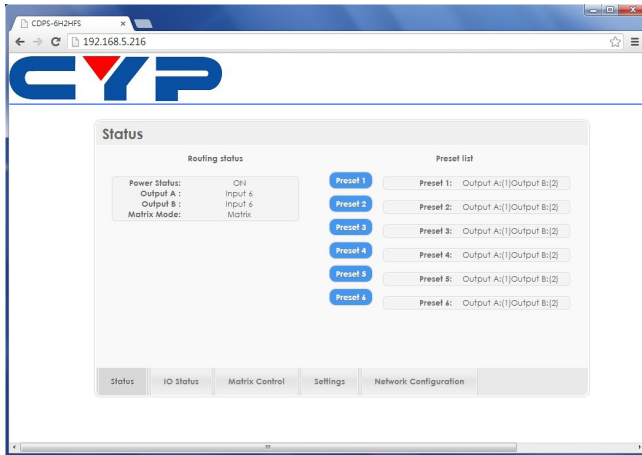
>
```

Type "IPCONFIG" To show all IP configurations.

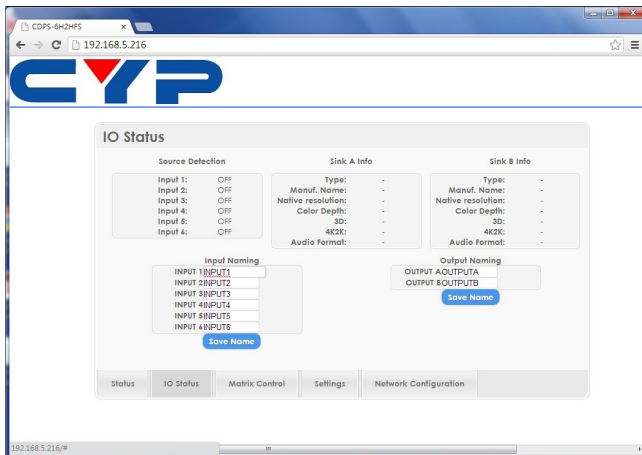
Note: All the commands will be not executed unless followed by a carriage return. Commands are case-insensitive. If the IP is changed then the IP Address required for Telnet access will also change accordingly.

6.8 Web GUI Control

On a PC/Laptop that is connected to an active network system, open a web browser and type device's IP address (available from LCM monitor or OSD menu) on the web address entry bar. The browser will display the device's Status, IO Status, Matrix Control, Settings and Network Configuration control pages for users to control.

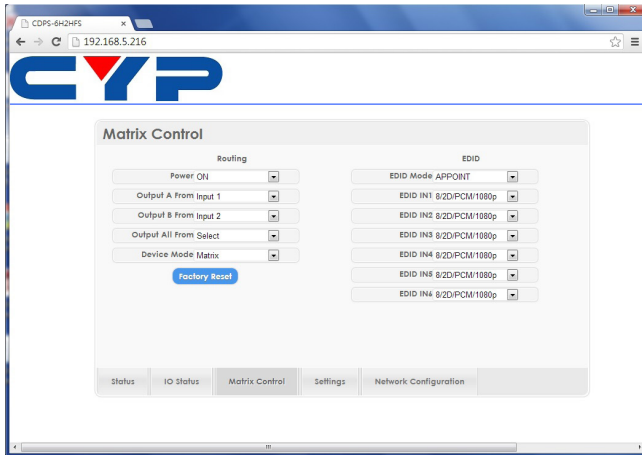


Click on IO Status for input and output selection.

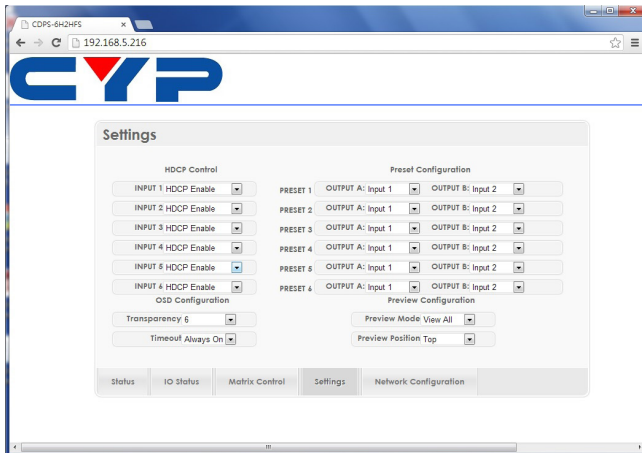




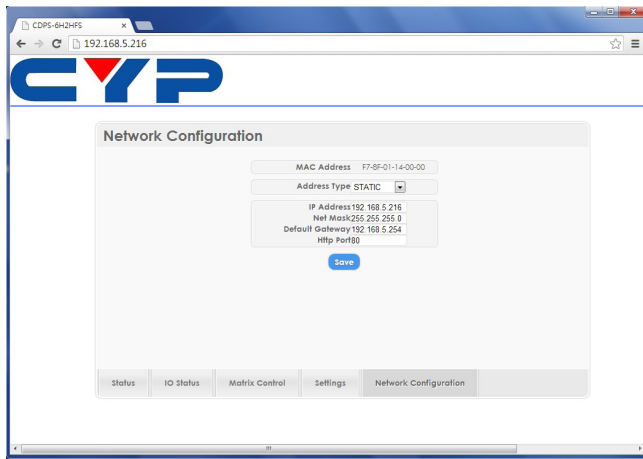
Click on Matrix Control for outputs and EIDID selections.



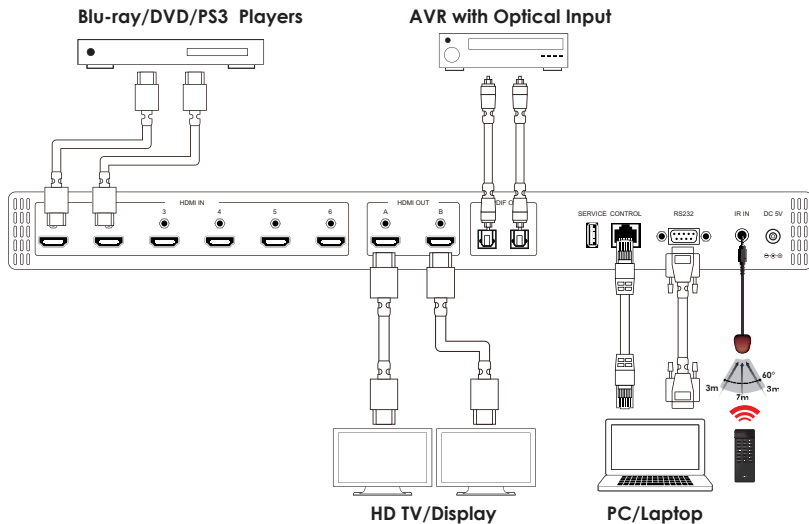
Click on Settings to set each input's HDCP Control and Preset Configuration.



Click on Network Configuration to set the device's IP configuration. Once the changes is saved the system will reset the IP address on the device automatically and user will need to re-enter the IP address to continue the Web GUI function.



7. CONNECTION DIAGRAM





8. SPECIFICATIONS

Frequency Bandwidth	300Mbps to 3Gbps
Input Ports	6 x HDMI 1 x USB (Service only) 1 x Control 1 x RS-232 1 x IR
Output ports	2 x HDMI 2 x Optical (S/PDIF)
Resolution	480i~1080p@50/60, 1080p@24, 4K x 2K (3840x2160/4096x2160@30Hz)
Output Level	VGA~WUXGA
THD+N	
Frequency Response	
SNR	
Crosstalk	
IR Frequency	30~50kHz
Power Supply	5VDC/2.6A (US/EU standards, CE/FCC/ UL certified)
ESD Protection	Human body model: ±8kV (air-gap discharge) ±4kV (contact discharge)
Dimensions	438mm (W) x 269mm (D) x 44mm (H) /Jacks Excluded 482mm (W) x 278mm (D) x 53mm (H) /Jacks & Rack Ears Included
Weight	3042 g
Chassis Material	Metal
Silkscreen Color	Black
Operating Temperature	0°C~40°C / 32°F ~ 104°F
Storage Temperature	-20°C~60°C / -4°F ~ 140°F
Relative Humidity	20~90% RH (no condensation)
Power Consumption (W)	4.7

DVI and HDMI Supported Resolutions	Input	Output
640x480@60	✓	✓
640x480@72	✓	✓
640x480@75	✓	✓
720x480@60	✓	✓
720x576p@50	✓	✓
800x600@60	✓	✓
800x600@72	✓	✓
800x600@75	✓	✓
1024x768@60	✓	✓
1024x768@70	✓	✓
1024x768@75	✓	✓
1280x720@50	✓	✓
1280x720@60	✓	✓
1280x720p@60	✓	✓
1280x768@60	✓	✓
1280x800@60	✓	✓
1280x1024@60	✓	✓
1360x768@60	✓	✓
1600x1200@60	✓	✓
1920x1080i@50	✓	✓
1920x1080i@60	✓	✓
1920x1080p@24	✓	✓
1920x1080p@25	✓	✓
1920x1080p@30	✓	✓
1920x1080p@50	✓	✓
1920x1080p@60	✓	✓
1920x1200@60(RB)	✓	✓
3840x2160@30	✓	✓
4096x2160@24	✓	✓



Audio Sampling Rate Up to 192 kHz

HDMI input (Up to 192kHz)	HDMI output	Optical output
LPCM 2CH	V	N/A
LPCM 5.1CH	V	X
LPCM 7.1CH	V	X
Dolby Digital 2~5.1CH/ DTS 2~5.1CH	V	N/A
Dolby TrueHD/ DTS-HD Master Audio	V	X

Audio Format LPCM 2/5.1/7.1CH, Dolby Digital 2~5.1CH, DTS 2~5.1CH (Pass through), Dolby TrueHD and DTS-HD Master Audio

HDMI input	HDMI output	Optical output
LPCM 2CH	V	V
LPCM 5.1CH	V	X
LPCM 7.1CH	V	X
Dolby Digital 2~5.1CH/ DTS 2~5.1CH	V	V
Dolby TrueHD/ DTS-HD Master Audio	V	X

9. ACRONYMS

ACRONYM	COMPLETE TERM
CAT5e	Category 5 Cable
CAT6	Category 6 Cable
CAT7	Category 7 Cable
CEC	Consumer Electronic Control
DVI	Digital Visual Interface
HDCP	High-bandwidth Digital Content Protection
HDMI	High Definition Multimedia Interface
PoE	Power over Ethernet
4Kx2K	3840x2160/ 4096x2160



CYPRESS TECHNOLOGY CO., LTD

Home page: <http://www.cypress.com.tw>

MPM-CDPS6H2HFS